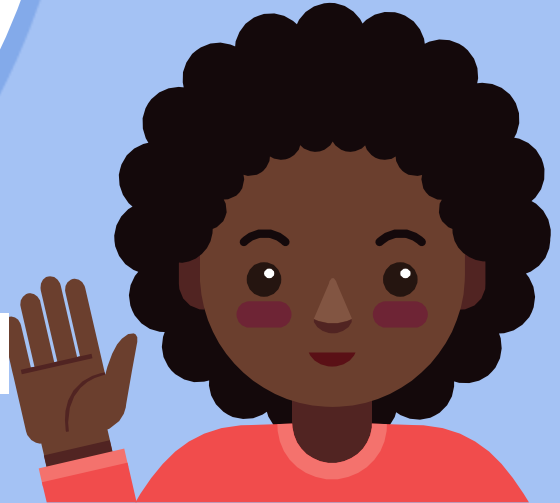


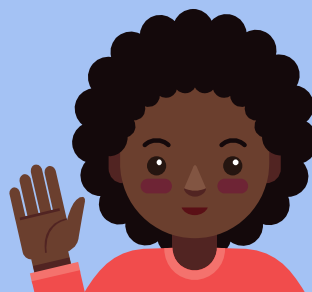
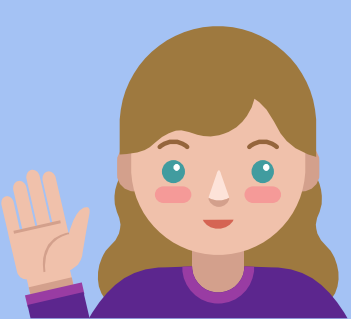
New Field Parent and Community Remote Learning Information And Q&A

Monday, August 31, 2020

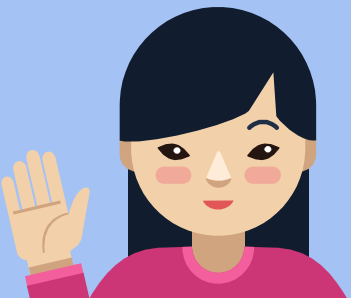
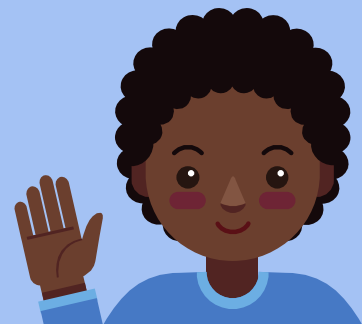
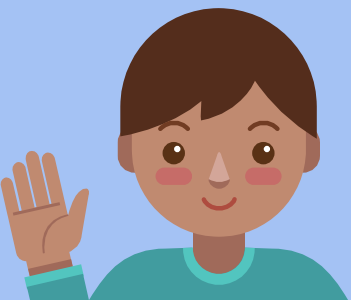
3:00 –4:00 PM(English) & 4:30 – 5:30 PM
(Spanish)***

*NOTE: This presentation will be recorded and
posted on the New Field website





Welcome Back,
New Field Families!



Ms. Conrey Callahan
Principal, New Field
SEVENTH year as a New
Field administrator!

Languages spoken:
English, Spanish
clcallahan@cps.edu



Mr. Alfredo Lopez
Assistant Principal, New
Field
Third year as a New Field
administrator!

Languages spoken: English,
Spanish

aalopez1@cps.edu



Ms. Claire Kunkel
Counselor, New Field
Second year as a New
Field counselor

Languages spoken:
English
cekunkel1@cps.edu

Mr. Daniel Lorsch
Case Manager, New
Field
First year as a New Field
case manager

Languages spoken:
English
dflorsch@cps.edu
Tuesdays, Wednesdays

Remote Learning?

- Will occur for the first quarter of the school year: September 8 - November 6, 2020
- Plan to transition to hybrid learning for K-4 classrooms in the second quarter
- Transition to full, in-person learning for PK and cluster classrooms (105 & 212) in November, 2020
- Transition to hybrid learning is dependent on data/information from Chicago Department of Health, local/state guidance and CPS leadership

CPS Final Reopening Framework

Spring 2020	Fall 2020
Digital and non-digital	Digital: All learning will take place through the Google Education Suite
Did not require daily attendance monitoring	Student attendance will be taken daily. <i>(Elementary: 1x per day, High School: 1x per course)</i>
Educators were not required to be available for the entirety of the school day.	Teachers will be available for the entirety of the school day.
Minimum thresholds for student activity provided; No logging of hours	<p>Students will receive live, real-time instruction each day. The remainder of their school day will consist of learning activities including check-ins with teachers or small group instruction, independent learning activities including self-directed projects, assignments, and physical activity.</p> <ul style="list-style-type: none"> ● Pre-K: 60 minutes of real-time instruction and 90 minutes of learning activities ● K-2: 180 minutes of real-time instruction and 180 minutes of learning activities ● 3-5: 205 minutes of real-time instruction and 155 minutes of learning activities ● 6-8: 230 minutes of real-time instruction and 130 minutes of learning activities ● 9-12: Real-time instruction will make up 80 percent of the school day with the remaining 20 percent saved for learning activities
Grading protections in place to ensure students with limited access to technology and supports are not penalized	Return to regular grading practices, as the district will ensure all students have the tools they need to succeed

Technology Updates

- All students that need a computer will receive a computer
- Complete technology survey online
- We are calling each family for technology appointments
- All technology will be distributed by Friday, September 4

New Field Families

Still Need a Chromebook?

Complete our online Tech Survey:

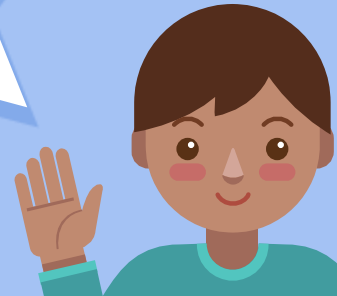
<https://forms.gle/BJ9v6MsVFtEiYKAVWA>

Need Help? Call our School (773) 534-2760
We can assist!



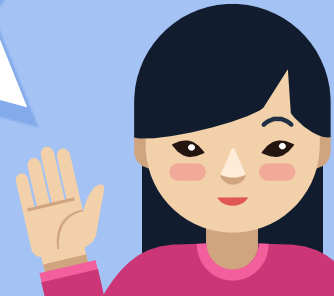
Teacher expectations

- × Provide daily remote learning that meets instructional minutes requirements for all content areas or courses for all students.
- × Focus on grade-level, standards-aligned instruction and students' social-emotional needs.
- × Provide face-to-face instruction to students on a computer screen
- × Be on screen AND available for student and parent supports during regular school hours 8:45 AM - 3:45 PM
- × Provide contact information and clear schedule for all students



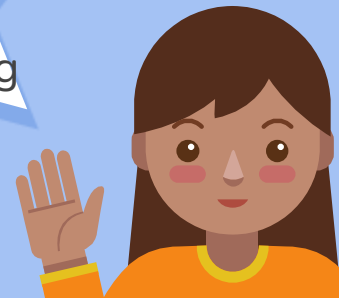
Student expectations

- Students will engage in all core classes and specials.
- Students are expected to be on Google Meets, with the camera on and audio on mute by at the start of their shift, just like in-person school.
- Students are expected to learn, socialize, and use this pandemic time as part of their education.
- All students must access Google Classroom AND Google Meet each day during remote learning.
- Student video must be on during entire Google class time.



Parent expectations

- Make sure students have eaten breakfast, are in clothes, and have all materials ready before virtual instruction begins
- Ensure that your child has access to the Internet
 - Click [here](#) for information on Internet Assistance Programs in Chicago
- Check your Device and Log into your CPS account at cps.edu/portal
- Familiarize yourself with Google Communication tools - [FACE Learning Opportunities](#), [New Field learning opportunities](#)
- **Communicate regularly with your child's classroom teachers** regarding absences, problems with school work, other barriers to learning



Attendance Procedure Changes

Attendance will be taken daily.

We need your help!

New attendance protocols for SY21.....

Parent expectations, absences:

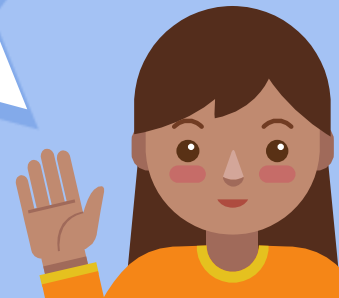
Option 1: Call our school

- **Report absences** to the school ASAP
 - Call 773-534-2760 and choose the “Attendance Office” Option
 - Speak SLOWLY and Leave:
 - Your name
 - Student’s name
 - Grade
 - Reason for Absence

Understand there are only specific reasons an absence will be considered
EXCUSED:

- Illness, death in the family, medical appointment, family emergency, other emergency outside of the student’s control

NOT EXCUSED: vacation, no excuse, no communication



Parent expectations, absences:

Option 2: email your classroom teacher

- **Report absences** to your classroom. These will be forwarded to our main office.
 - Include your child's first and last name
 - Include a reason for absence

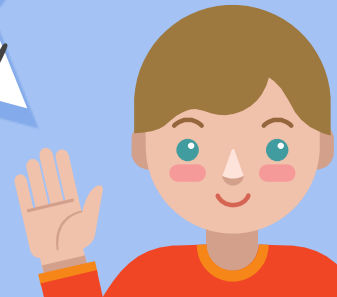
Understand there are only specific reasons an absence will be considered
EXCUSED:

- Illness, death in the family, medical appointment, family emergency, other emergency outside of the student's control

NOT EXCUSED: vacation, no excuse, no communication

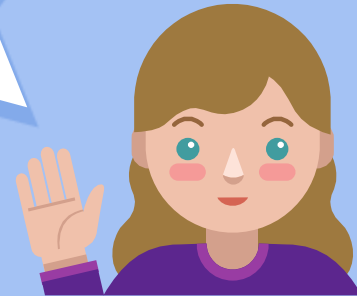
Attendance Reminders

- Students who do not log in to the Google Video Meeting will be marked ABSENT
- Logging into the Google Classroom DOES NOT = being PRESENT (you must be in the Google Meet)
- Students who are not present at their final Google Meet will be marked as half-day absent or early dismissal
- Attendance time will be averaged to determine $\frac{1}{2}$ day absence or full day absence
- Missing 1 class = $\frac{1}{2}$ day absence!



Late arrival

- × Students who log in more than 10 minutes after the start of each class, will be marked TARDY
- × Tardies will ONLY be excused with a written parent excuse that meets the CPS guidelines for allowable tardies



Early dismissals

- × Early dismissals will ONLY be excused with a written parent excuse or communication with teacher or office that meets the CPS guidelines for allowable early dismissals



Attendance questions ?

Ms. Sue Briggs!

sschmauderer-bri@cps.edu



Real-time vs. Independent Learning Time

Grade	real-time instruction	learning activities
Pre-K	60 minutes	90 minutes
K-2	180 minutes	180 minutes
3-4	205 minutes	155 minutes

A Day in the Life of a CPS Elementary Student Remote Learning



1

Real time virtual instruction

An elementary student's day remote learning would mirror a day learning at school. It would include a mix of real-time instruction with their teacher and classmates, small group activities, and independent learning time within each of their classes. All CPS students will receive several hours of live instruction each and every day.



2

Lunch and breaks throughout the day

Elementary school students will have independent time for lunch as well as short breaks during the school day.



3

Academic electives and enrichment

Much like a normal school, students will also have self-directed time for electives, academic enrichment, and special classes such as arts and physical education in addition to real-time instruction.



Typical day

- Attendance is taken by the homeroom teacher
- Students are tardy if they are not online (on Google Meets) with the screen within 10 minutes of their morning meeting starting
- Students' will have a fixed schedule, it will be the same each week
- Classroom schedules will be posted in Google Classroom and on our school website
- Students will have a mix of live, real-time instruction (synchronous) and independent learning tasks (asynchronous)
- K-4 students will have live, real-time instruction for core content and enrichment (music, Art, PE, library and elective classes** grades 2-4)



PK Schedule

9:00 - 10:00

Group 1 (5 students)

10:15 - 11:15
students)

Group 2 (5

1:00 - 2:00
students)

Group 3 (5

Parents choose when independent learning tasks should be completed

PK Classroom Assignments

Announced this week!

K-4 Classroom Assignments

All students should have received their classroom assignment and general schedule

If you did not, please call our office!

Update your email in our system

K-2 Schedule

Students are in half day shifts for live instruction (A or B)

Students complete independent learning tasks at a time that is convenient for the family

Teachers will be available for office hours, parent conferences, family meetings during independent learning time. They will schedule specific times to meet with you!

Third & Fourth Grade

205 minutes of live instruction

Students complete independent learning tasks at a time that is convenient for the family

Teachers will be available for office hours, parent conferences, family meetings during independent learning time. They will schedule specific times to meet with you!

Elective Classes!

Second, Third & Fourth grade students will be able to choose two enrichment classes

Elective classes will take place on Wednesdays

Students can select an enrichment course based on their interest

Elective courses are ungraded

Examples of elective courses

- Hip-Hop Dance
- Music
- Capoeira
- World Language
- Drumming
- Science Club
- Cursive
- Battle of the Books
- Theater
- Cooking
- Debate

Setting up Remote Learning at Home

- Dedicated space where your child can sit comfortably
- Limited distractions
- Space to use the computer and write/ use workbooks
- A routine space each day
- A space to organize learning materials



<https://www.nytimes.com/wirecutter/blog/remote-learning-space-set-up/>

Recommended supplies

- 1 set of headphones
- Dry erase board
- Dry erase markers
- Glue sticks
- Children's scissors (safety/ blunt tip)
- Ruler
- #2 pencils
- Crayons
- Markers
- Colored Pencils
- 5 composition books (primary ruled for PK-1, wide rule for grades 2-4)
- Highlighters (grades 2-4)
- Post its (grades 2-4)
- Sharpie marker
- Eraser

Families: If you are in hardship and need support with school supplies, New Field can assist with supply kits.

Families:

If you are in hardship and need support with school supplies, New Field can assist with supply kits.

5 Week Learning Kits

Teachers are preparing 5 week learning kits to help engage in instructional activities

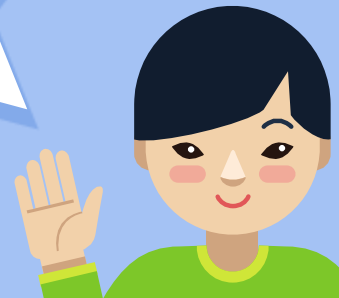
Tuesday, September 8 (Last Name: A-M)

Grade Level	Kinder, First	Second, Third & Fourth
Door/ Location	Cafeteria and West Playground	Gym & East Playground

Wednesday, September 9 (Last Name N-Z)

Grade Level	Kinder, First	Second, Third & Fourth
Door/ Location	Cafeteria and West Playground	Gym & East Playground

PK: TBD



Technology Troubleshooting

- × Mr. Cody McLaurine, Technology Teacher is available daily during the month of September
- × 11:00 – 3:45 PM
cpmclaurine@cps.edu



September's Theme: Relationships & Community!

- Learning names and interests
- Team building activities
- Practicing routines and procedures
- Learning technology
- Connecting 1/1 with families
- Games, activities
- Launching instruction

Note: this may mean we build up to three hours across the month!

October's Theme: Building Academic Stamina!

- Launching Units of Study for core content
- Engaging in small group instruction
- Assessment: understanding our students' needs
- Longer stretches of time with academic content
- Celebrating successes!

Child Care During School Week

- × J at School
- × CPS plans forthcoming
- × Nothing as of yet for New Field, specifically
- × Meal service will continue at the cafeteria between 9am to 1pm.



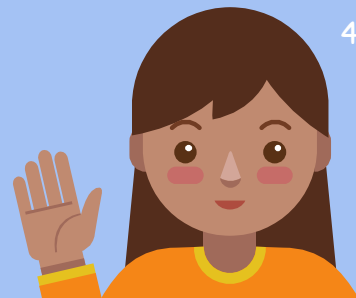
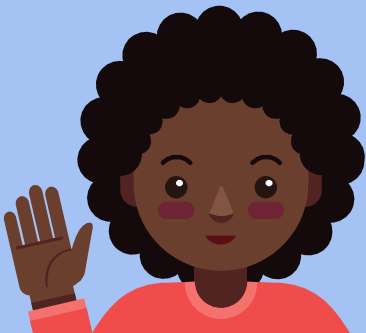
This year's theme: flexibility!

We will do our best to let you know of updates as they happen.

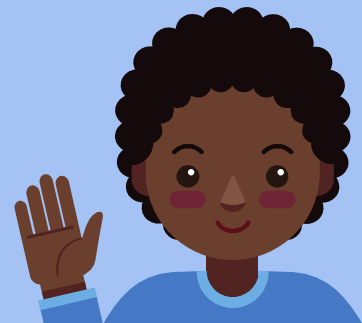
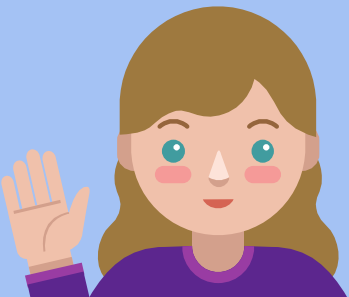
- Please ensure that you are checking the website, newfield.cps.edu or Facebook page, Instagram and/or subscribe to our SMORE for up to date information.

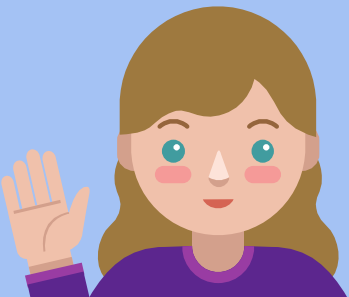
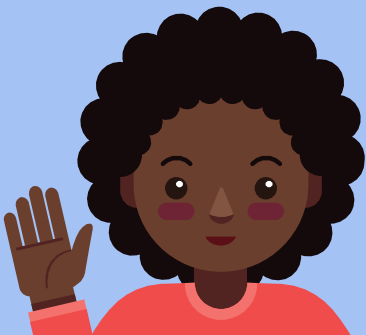
- Staff directory & emails





Q&A





Thanks,
New Field Family!



Free templates for all your presentation needs



For PowerPoint and
Google Slides



100% free for personal
or commercial use



Ready to use,
professional and
customizable



Blow your audience
away with attractive
visuals